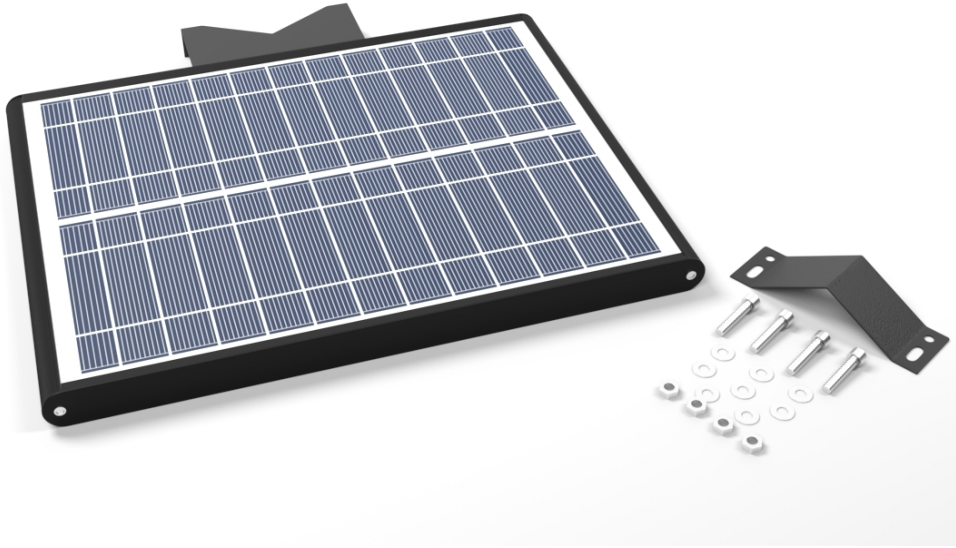


## SOLAR JUNCTION BOX INSTALL GUIDE



For this install guide, the materials provided are reflected in the above image. You will have the following items:

- All-in-one solar junction box (battery inside the unit) with pre-mounted install bracket
- 8 washers
- 4 nuts
- 4 bolts
- Install bracket (2<sup>nd</sup> half)
- Pin for box activation (keep in safe place for box activation)

Additional tools you will need:

- Wrench
- Hex key (6mm)
- Pole for install

An extra set of hands is useful when installing the bracket and tightening the bolts however, install can be done independently.

**Step 1.** Lay out all materials to make sure you have the correct quantities.

## SOLAR JUNCTION BOX INSTALL GUIDE

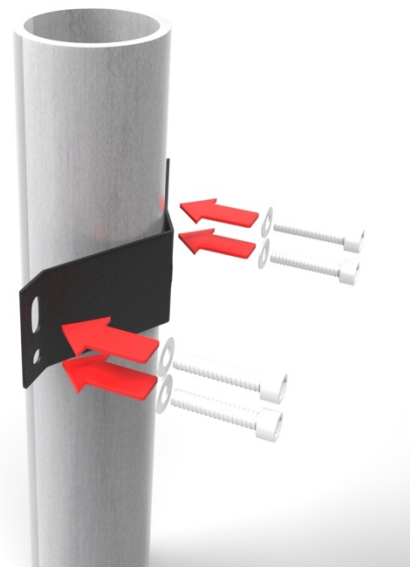
**Step 2.** Take 1 washer and 1 bolt and slide the washer onto the bolt threading—all the way to the base of the bolt. Repeat for all bolts (4 total).

**Step 3.** Insert the bolt/ washer combo into the slots on the accompanying install bracket piece. All 4 washer/ bolt combos should be used. Set aside.

**Step 4.** Take the remaining 4 washers and match them with the other 4 nuts provided.

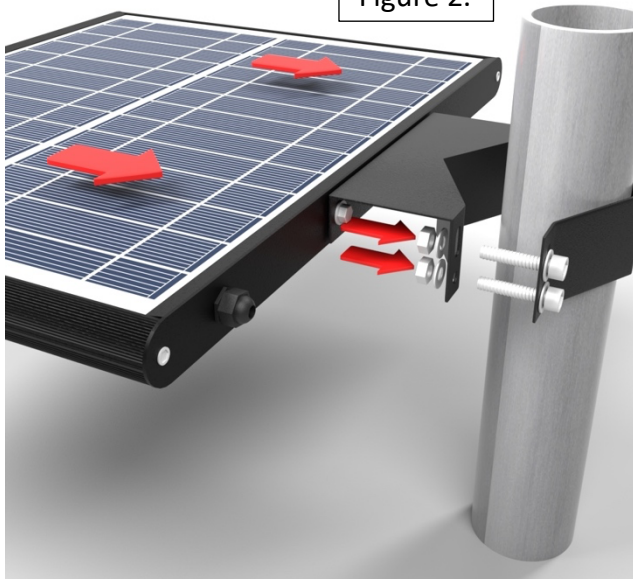
**Step 5.** Take the bracket and carefully align the 'v' of the bracket (the widest opening) facing the pole. (Reference Figure 1)

Figure 1.



**Step 6.** While holding the back bracket in place, take the junction box unit and align the built-in bracket with the protruding bolts. Slide the bolts through the pre-fabricated holes on the junction box's bracket. (Reference Figure 2)

Figure 2.



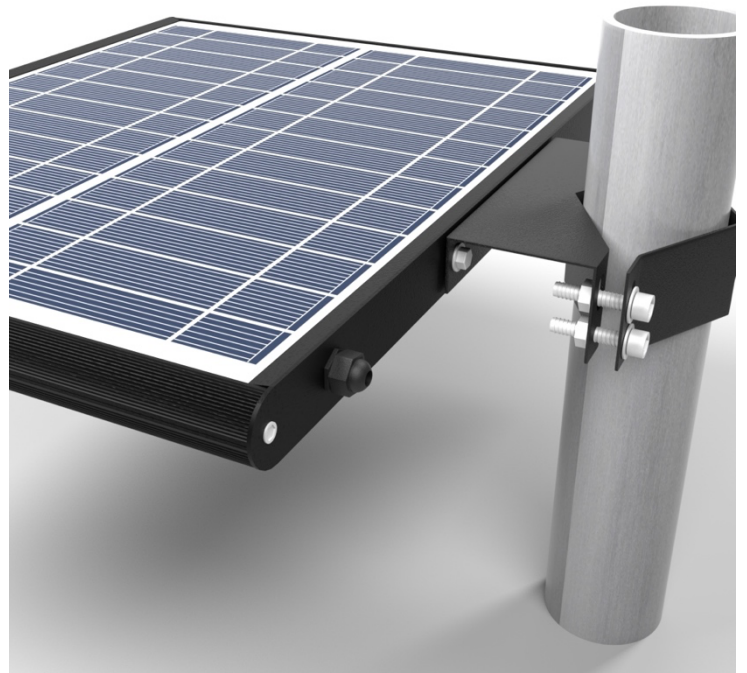
**Step 7.** Take the final 4 washer/ nuts and thread onto the bolts sticking through the junction box's bracket. Washer should be put on first then the nut. Repeat for all 4 bolts. There should be no hardware left

**Step 8.** Tighten the nuts onto all 4 bolts as much as possible by hand. Move to the hex key tool to tighten the bolts and use the wrench to hold the nuts in place.

## SOLAR JUNCTION BOX INSTALL GUIDE

**Step 9.** Once the bolts and accompanying hardware have been tightened to their max potential, step away from the unit to ensure it is not loose or uneven. Once it is determined that the box is mounted correctly, move to the next step.

**Step 10.** Take the provided pin and insert it into the pin sized hole located on the underside of the junction box unit in the circular area. Hold down for 3 seconds or until the Red light turns 'on'.



This activates the solar junction box and is ready to operate.

For any install questions, please call us at 888) 925-1966.